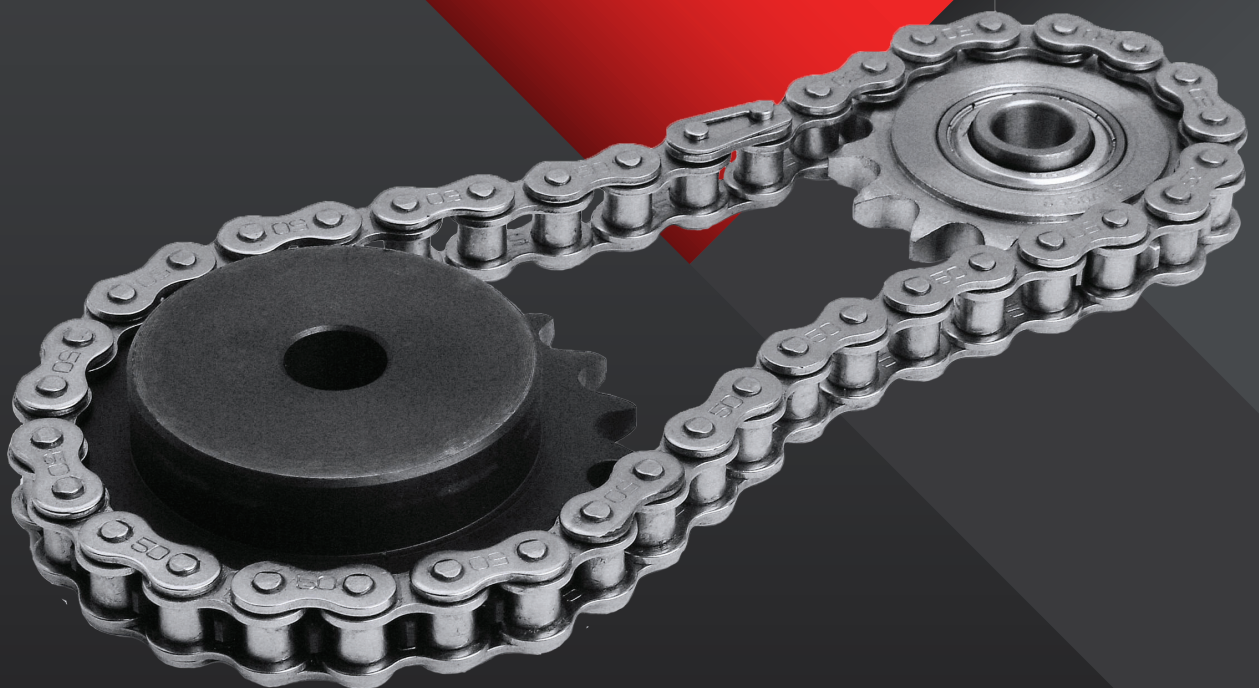


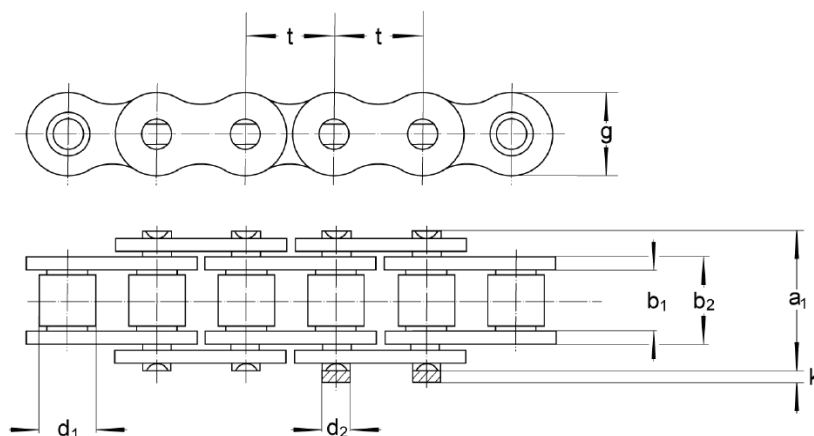
WEST ELECTRONIC

Obiličeva 15, 37240 Trstenik
069 711 300

KATALOG LANACA I LANČANIKA

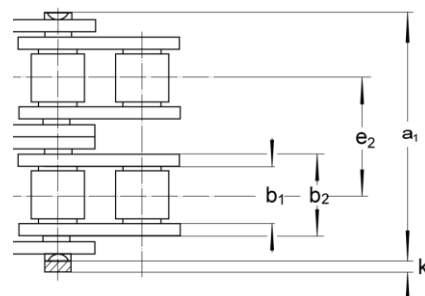
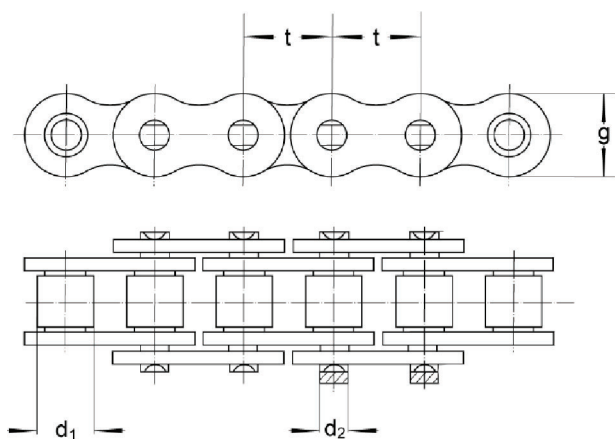


Jednoredni lanci



Oznaka lanca	Dimenzije						
	Korak t (zoll)	Korak t (mm)	b_1 (mm)	d_1 (mm)	b_2 (mm)	g (mm)	a_1 (mm)
06B-1	3/8"	9.525	5.72	6.35	8.53	8.5	13.5
081	1/2"	12.7	3.3	7.75	5.8	9.9	10.2
083	1/2"	12.7	4.88	7.75	7.9	10.3	12.9
084	1/2"	12.7	4.88	7.75	8.8	11.1	14.8
085	1/2"	12.7	6.38	7.77	9.07	9.91	14
08B-1	1/2"	12.7	7.75	8.51	11.3	12	17
08A-1	1/2"	12.7	7.95	7.92	11.18	12.07	17.8
10B-1	5/8"	15.875	9.65	10.16	13.28	14.7	19.6
10A-1	5/8"	15.875	9.53	10.16	13.84	15.09	21.8
12B-1	3/4"	19.05	11.68	12.07	15.62	16.2	22.7
12A-1	3/4"	19.05	12.7	11.91	17.75	18.08	26.9
60H	3/4"	19.05	12.7	11.91	19.43	17.5	30.9
16B-1	1"	25.4	17.02	15.88	25.45	21	36.1
16A-1	1"	25.4	15.88	15.88	22.61	24.13	33.5
20B-1	1.1/4"	31.75	19.56	19.05	29.01	26.4	43.2
20A-1	1.1/4"	31.75	19.05	19.05	27.46	30.18	41.1
24B-1	1.1/2"	38.1	25.4	25.4	37.92	33.4	53.4
24A-1	1.1/2"	38.1	25.4	22.23	35.46	36.2	50.8

Dvoredni lanci

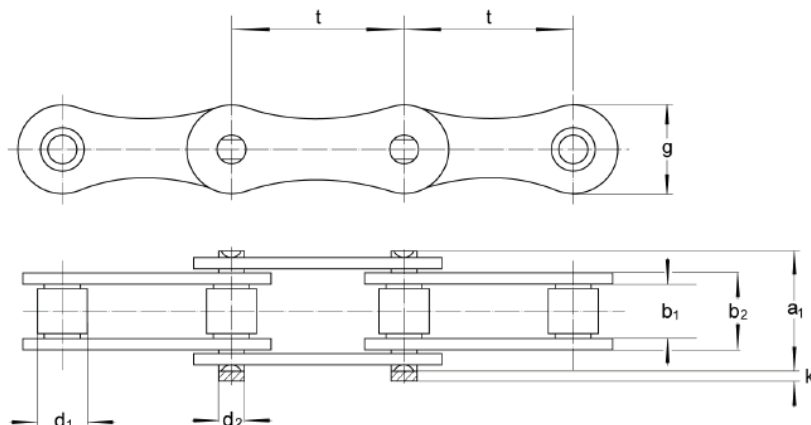


Oznaka lanca	Dimenzije						
	Korak t (zoll)	Korak t (mm)	b ₁ (mm)	d ₁ (mm)	b ₂ (mm)	g (mm)	a ₁ (mm)
06B-2	3/8"	9.525	5.72	6.35	8.53	8.5	23.8
08B-2	1/2"	12.7	7.75	8.51	11.3	12	31
08A-2	1/2"	12.7	7.95	7.92	11.18	12.07	32.3
10B-2	5/8"	15.875	9.65	10.16	13.28	14.7	36.2
10A-2	5/8"	15.875	9.53	10.16	13.84	15.09	39.9
12B-2	3/4"	19.05	11.68	12.07	15.62	16.2	42.2
12A-2	3/4"	19.05	12.7	11.91	17.75	18.08	49.8
16B-2	1"	25.4	17.02	15.88	25.45	21	68
16A-2	1"	25.4	15.88	15.88	22.61	24.13	62.7
20B-2	1.1/4"	31.75	19.56	19.05	29.01	26.4	79.7
20A-2	1.1/4"	31.75	19.05	19.05	27.46	30.18	77

Troredni lanci

Oznaka lanca	Dimenzije						
	Korak t (zoll)	Korak t (mm)	b ₁ (mm)	d ₁ (mm)	b ₂ (mm)	g (mm)	a ₁ (mm)
12B-3	3/4"	19.05	11.68	12.07	15.62	16.2	61.7
12A-3	3/4"	19.05	12.7	11.91	17.75	18.08	72.6

Lanci sa dugim člankom



Oznaka lanca	Dimenzije						
	Korak t (zoll)	Korak t (mm)	b_1 (mm)	d_1 (mm)	b_2 (mm)	g (mm)	a_1 (mm)
208B	1"	25.4	7.75	8.51	11.3	11.8	17
208A	1"	25.4	7.95	7.92	11.15	12	17.8
210B	1.1/4"	31.75	9.65	10.16	13.28	14.2	19.6
210A	1.1/4"	31.75	9.53	10.16	13.8	15	21.8
212B	1.1/2"	38.1	11.68	12.07	15.62	16.1	22.7
212A	1.1/2"	38.1	12.7	11.91	17.7	18	26.9

Oznaka lanca **B** je po **DIN** standardu.
Oznaka lanca **A** je po **ANSI** standardu.

06B1

Oznaka	broj zuba	PD (mm)	d _{min} (mm)	d _{max} (mm)	H (mm)	L (mm)	masa (kg)
06B-1/08	8	24.89	8	8	15	22	0.03
06B-1/09	9	27.85	8	8	18	22	0.04
06B-1/10	10	30.82	8	8	20	22	0.06
06B-1/11	11	33.80	8	8	22	25	0.08
06B-1/12	12	36.80	8	10	25	25	0.10
06B-1/13	13	39.80	10	12	28	25	0.12
06B-1/14	14	42.80	10	15	31	25	0.15
06B-1/15	15	45.81	10	18	34	25	0.19
06B-1/16	16	48.82	10	20	37	28	0.24
06B-1/17	17	51.83	10	23	40	28	0.29
06B-1/18	18	54.85	10	26	43	28	0.33
06B-1/19	19	57.87	10	28	45	28	0.37
06B-1/20	20	60.89	10	28	46	28	0.39
06B-1/21	21	63.91	12	30	48	28	0.42
06B-1/22	22	66.93	12	35	50	28	0.46
06B-1/23	23	69.95	12	35	52	28	0.50
06B-1/24	24	72.97	12	35	54	28	0.54
06B-1/25	25	76.00	12	40	57	28	0.60
06B-1/26	26	79.02	12	40	60	28	0.67
06B-1/27	27	82.04	12	40	60	28	0.68
06B-1/28	28	85.07	12	40	60	28	0.70
06B-1/29	29	88.09	12	40	60	28	0.72
06B-1/30	30	91.12	12	40	60	28	0.77
06B-1/31	31	94.15	14	43	65	30	0.88
06B-1/32	32	97.17	14	43	65	30	0.90
06B-1/33	33	100.20	14	43	65	30	0.91
06B-1/34	34	103.23	14	43	65	30	0.94
06B-1/35	35	106.26	14	43	65	30	0.95
06B-1/36	36	109.29	14	48	70	30	1.07
06B-1/37	37	112.32	14	48	70	30	1.09
06B-1/38	38	115.35	14	48	70	30	1.10
06B-1/39	39	118.37	14	48	70	30	1.12
06B-1/40	40	121.40	14	48	70	30	1.16
06B-1/41	41	124.43	14	48	78	32	1.28

06B-1/42	42	127.46	14	48	78	32	1.36
06B-1/43	43	130.49	14	48	78	32	1.44
06B-1/44	44	133.52	14	48	78	32	1.52
06B-1/45	45	136.55	14	40	78	32	1.40
06B-1/46	46	139.58	14	48	78	32	1.68
06B-1/47	47	142.61	14	48	78	32	1.76
06B-1/48	48	145.64	14	48	78	32	1.84
06B-1/50	50	151.69	14	48	78	32	2.06
06B-1/54	54	163.82	14	48	78	32	2.32
06B-1/57	57	172.91	14	40	78	32	1.70
06B-1/60	60	182.00	14	48	78	32	2.80
06B-1/64	64	194.12	14	48	78	32	3.12
06B-1/70	70	212.30	14	48	78	32	3.60
06B-1/72	72	218.37	14	48	78	32	3.76
06B-1/76	76	230.49	14	48	78	32	2.79
06B-1/80	80	242.61	14	52	78	32	4.40
06B-1/84	84	254.74	14	52	80	32	4.72
06B-1/85	85	257.77	14	52	80	32	4.93
06B-1/90	90	272.93	14	55	80	32	5.20
06B-1/92	92	278.99	14	55	80	32	5.45
06B-1/95	95	288.08	14	55	80	32	3.95
06B-1/96	96	291.11	14	55	80	32	5.68

10B-1

<i>Oznaka</i>	broj zuba	PD (mm)	d _{min} (mm)	d _{max} (mm)	H (mm)	L (mm)	masa (kg)
10B-1/08	8	41.48	10	11	25	25	0.12
10B-1/09	9	46.42	10	15	30	25	0.17
10B-1/10	10	51.37	10	18	35	25	0.23
10B-1/11	11	56.34	12	21	37	30	0.30
10B-1/12	12	61.34	12	25	42	30	0.38
10B-1/13	13	66.32	12	28	47	30	0.47
10B-1/14	14	71.34	12	32	52	30	0.57
10B-1/15	15	76.36	12	35	57	30	0.69
10B-1/16	16	81.37	12	40	60	30	0.77
10B-1/17	17	86.39	12	40	60	30	0.82
10B-1/18	18	91.42	14	50	70	30	1.02
10B-1/19	19	96.45	14	50	70	30	1.06
10B-1/20	20	101.49	14	50	75	30	1.22
10B-1/21	21	106.52	16	50	75	30	1.26
10B-1/22	22	111.55	16	50	80	30	1.42
10B-1/23	23	116.58	16	50	80	30	1.47

10B-1/60	60	303.32	20	64	100	43	7.32
10B-1/70	70	353.84	20	64	100	43	7.76
10B-1/76	76	384.16	20	60	100	43	8.68
10B-1/80	80	404.35	20	70	100	43	10.20
10B-1/84	84	424.57	20	70	100	50	11.72
10B-1/95	95	480.14	20	60	100	50	13.24
10B-1/96	96	485.19	20	70	100	50	14.00

12B-1

Oznaka	broj zuba	PD (mm)	d _{min} (mm)	d _{max} (mm)	H (mm)	L (mm)	masa (kg)
12B-1/08	8	49.78	12	16	31	30	0.22
12B-1/09	9	55.70	12	20	37	30	0.31
12B-1/10	10	61.64	12	23	42	30	0.39
12B-1/11	11	67.61	14	28	46	35	0.54
12B-1/12	12	73.60	14	32	52	35	0.68
12B-1/13	13	79.59	14	36	58	35	0.84
12B-1/14	14	85.61	14	40	64	35	1.01
12B-1/15	15	91.63	14	44	70	35	1.19
12B-1/16	16	97.65	16	48	75	35	1.36
12B-1/18	18	109.71	16	55	80	35	1.73
12B-1/19	19	115.75	16	55	80	35	1.73
12B-1/20	20	121.78	16	55	80	35	1.83
12B-1/21	21	127.82	20	55	90	40	2.37
12B-1/22	22	133.86	20	55	90	40	2.48
12B-1/23	23	139.90	20	55	90	40	2.58
12B-1/24	24	145.94	20	55	90	40	2.70
12B-1/25	25	152.00	20	55	90	40	2.81
12B-1/26	26	158.04	20	58	95	40	3.11
12B-1/27	27	164.09	20	58	95	40	3.24
12B-1/28	28	170.13	20	58	95	40	3.37
12B-1/29	29	176.19	20	60	95	40	3.49
12B-1/30	30	182.25	20	60	95	40	3.66
12B-1/31	31	188.31	20	64	100	40	3.96
12B-1/32	32	194.35	20	64	100	40	4.14
12B-1/33	33	200.40	20	64	100	40	4.28
12B-1/34	34	206.46	20	64	100	40	4.45
12B-1/35	35	212.52	20	64	100	40	4.62
12B-1/36	36	218.58	20	70	100	40	4.79
12B-1/37	37	224.64	20	70	100	40	4.97
12B-1/38	38	230.69	20	70	100	40	5.15

12B-1/39	39	236.75	20	70	100	40	5.34
12B-1/40	40	242.81	20	70	100	40	5.54
12B-1/41	41	248.87	20	70	110	56	5.78
12B-1/42	42	254.93	20	70	110	56	6.02
12B-1/43	43	260.98	20	70	110	56	6.26
12B-1/44	44	267.04	20	70	110	56	6.50
12B-1/45	45	273.10	20	60	110	56	6.30
12B-1/46	46	279.16	20	70	110	56	6.98
12B-1/47	47	285.21	20	70	110	56	7.22
12B-1/48	48	291.27	20	70	110	56	7.46
12B-1/49	49	297.33	20	70	110	56	7.70
12B-1/50	50	303.39	20	70	110	56	7.94
12B-1/54	54	327.64	20	70	110	56	8.90
12B-1/57	57	345.81	20	60	110	56	7.75
12B-1/60	60	363.99	20	70	110	56	10.34
12B-1/65	65	394.29	20	70	110	56	11.64
12B-1/66	66	400.36	20	70	110	56	12.00
12B-1/70	70	424.60	20	70	110	56	12.74
12B-1/72	72	436.74	20	80	110	56	13.22
12B-1/76	76	460.99	20	60	110	56	12.50
12B-1/80	80	485.22	20	80	110	56	15.14
12B-1/84	84	509.48	20	80	110	56	16.10
12B-1/95	95	576.17	20	92	110	56	18.74
12B-1/96	96	582.23	20	92	110	56	18.98

16B-1

<i>Oznaka</i>	broj zuba	PD (mm)	d _{min} (mm)	d _{max} (mm)	H (mm)	L (mm)	masa (kg)
16B-1/08	8	66.37	16	22	42	35	0.50
16B-1/09	9	74.27	16	28	50	35	0.68
16B-1/10	10	82.19	16	34	55	35	0.87
16B-1/11	11	90.14	16	38	61	40	1.18
16B-1/12	12	98.14	16	44	69	40	1.48
16B-1/13	13	106.12	16	48	78	40	1.82
16B-1/14	14	114.15	16	53	84	40	2.14
16B-1/15	15	122.17	16	58	92	40	2.52
16B-1/16	16	130.20	20	64	100	45	3.19
16B-1/17	17	138.22	20	70	100	45	3.41
16B-1/18	18	146.28	20	70	100	45	3.62
16B-1/19	19	154.33	20	70	100	45	3.86
16B-1/20	20	162.38	20	70	100	45	4.10
16B-1/21	21	170.43	20	70	110	50	5.09
16B-1/22	22	178.48	20	70	110	50	5.35
16B-1/23	23	186.53	20	70	110	50	5.66
16B-1/24	24	194.59	20	70	110	50	5.94
16B-1/25	25	202.66	20	70	110	50	6.25
16B-1/26	26	210.72	20	76	120	50	7.07
16B-1/27	27	218.79	20	76	120	50	7.39
16B-1/28	28	226.85	20	76	120	50	7.72
16B-1/29	29	234.92	20	76	120	50	8.11
16B-1/30	30	243.00	20	76	120	50	8.47
16B-1/31	31	251.08	25	76	120	50	8.78
16B-1/32	32	259.13	25	76	120	50	9.19
16B-1/33	33	267.21	25	76	120	50	9.63
16B-1/34	34	275.28	25	76	120	50	10.02
16B-1/35	35	283.36	25	76	120	50	10.50
16B-1/36	36	291.44	25	76	120	50	10.90
16B-1/37	37	299.51	25	76	120	50	11.30
16B-1/38	38	307.59	25	76	120	50	11.86
16B-1/39	39	315.67	25	76	120	50	12.32
16B-1/40	40	323.73	25	76	120	50	12.86
16B-1/46	46	372.21	25	80	125	68	16.10
16B-1/50	50	404.52	25	80	125	68	18.26
16B-1/57	57	461.07	25	65	125	68	15.50